



Wrekin North Riding Club

Show Schedule 2025

Open Shows

April 20th

May 18th

June 15th

July 20th

August 17th

September 21st

Stirchley Show Ground, Stirchley Road,
Stirchley, TF3 1EH

www.wrekinnorth.co.uk

 Wrekin North Riding Club

 Wrekin North Riding Club



**NEDGE FARM RIDING CENTRE
& RETAIL**

**TELFORD TF11 9PL
TEL 07931 617658**

nedgefarm@hotmail.com



Annual Membership



Juniors (Aged under 16 on 1st April 2024) £15
Senior £20

To Join please complete the online membership form on
www.wrekinnorth.co.uk

Open Show Entries

All entries must be prebooked & paid online on www.horsemonkey.com

Members £11 Guests £13

Tiny Trotters and Fun Classes Members £7 Guests £9

First Aid £2 per competitor

No refunds are given for missed classes. Please make sure you are available for your class

Open Show Championship Points and Awards

Points are awarded to MEMBERS ONLY and can only be backdated by 1 month from joining

PLACE POINTS 1st-6, 2nd-5, 3rd-4, 4th-3, 5th-2 6th-1.

All members will receive 1 bonus point for all classes entered

At least two Shows must be attended with the same horse and rider combination entered in the same class for points to count towards end of year Championships and Trophies

Rosettes to 6th place in all classes (Members or Guests)

How to Find the Showground

From Telford Town Centre Ring Road go to the St Quentin roundabout (by the Holiday Inn Hotel). Turn into Stirchley Avenue, at the next mini roundabout turn right into Randlay Avenue.

At the next mini roundabout turn right into Grange Avenue then immediately right into Stirchley Road TF3 1EH.



Hand Morgan & Owen Solicitors

Sale and purchase of farming businesses

Promotion and option agreements

Agricultural partnership issues

Easements and rights of way

Sale and purchase of land

Service and media masts

Tax and estate matters

Succession planning

Family matters

Lawyers **for your** Lifetime

Est. 1730 - www.hmo.co.uk

STAFFORD - 17 Martin Street ST16 2LF
01785 211 411

RUGELEY - 3 Albion Street WS15 2BY
01889 583 871



***Tempertons have been providing
estate agency advice within the
Newport region for over 50 years***



The firm's longevity and success can be attributed to the strong family ethos and friendly personal service that we offer.

We pride ourselves on a service second to none.

***If you have a property to sell, to rent or commercial premises, then
please do contact us for professional and experienced advice.***



01952 812519

23-25 High Street, Newport, TF10 7AT
newport@tempertons.co.uk
www.tempertons.co.uk



Proudly supporting the Wrekin North Riding Club



A Warm Welcome To our Wrekin North Riding Club Open Show Schedule 2025.



WNRC is a long established riding club based in Telford at our Stirchley Showground and serving the surrounding areas in Shropshire, Staffordshire and West Midlands.

The Club is proud to have operated throughout its many years in existence as a "not for Profit" organisation, run entirely by volunteers and reinvesting any surplus funds into improvements for the benefit of the entire membership.

Membership has boomed over recent years despite the problems of the pandemic and the Club has gone from strength to strength. There are many very good reasons for our success.

We are a very active club offering a wide range of equestrian activities including training clinics and competitions for all interests and abilities. The regular training clinics and competitions include showjumping, dressage, working hunter, and in hand and ridden showing. Classes are open to both Juniors and Seniors and Horses and Ponies with special focus on our many enthusiastic Tiny Trotters. Classes can lead to qualification at all levels including the extremely prestigious Stars Champion of Champions at Aintree where WNRC has been chosen as one of the select band of qualifying Clubs.

We always welcome non-members in any class at our shows and encourage you to come along, have fun and experience the family atmosphere at Stirchley Showground throughout the summer and at our indoor venues during the winter.

The Club is justifiably proud of its record and reputation which has been created and cemented over many years. Our thanks go out for the loyalty and "get up and go" of the hard working Club team including our Sponsors, the Committee, our numerous helpers and their friends and families.

However like any Club the heart is in the Membership. We aim to foster a love of all forms of equestrian sport and to create an environment where all Members and guests can thoroughly enjoy their horses and ponies in a friendly and relaxed atmosphere.

Do come and join us soon—we're looking forward to welcoming you to our Stirchley Showground.

Yours

Dave Gwilliam Chair



ROSETTE EXCHANGE

BROUGHT TO YOU BY WREKIN NORTH RC & NEDGE FARM RETAIL

1 Rosette = 1 £1.00 Voucher
to be spent at Nedge Farm Retail
(tent located on the showground)

Rosette exchanges to be done via our
Show Secretary during Open Shows.

Only Rosettes won this Season are valid for Exchange
Please exchange your Rosettes on the day you
recieve them.

**Your Retail Vouchers can be saved up
throughout the season, but they must be used
by the last show of the Season.**





T: 01952 587692

F: 01952 587971

www.fasltd.co.uk



RING 1

Show Jumping



All jumping classes will be run under single phase rules
All classes are for riders of any age but must be
an appropriate size for their horse/pony
Classes will be split into Junior and Senior competitors

Entry Fees

Jumping Classes 10.00am. Members £9.00. Non-Members £11.00
Clear Round Start 9.00am £5 per Entry. Limited Entries

CLASS	QUALIFIER	DESCRIPTION
Clear Round Start 9.00am		Fences Approximately 40 cm. Online entry only. Entry Fee £5 per Round. (Limited entries)

Classes Start at 10.00 Prompt - Please see Facebook for allocated times

1		Nursery Stakes - Fences 40cm cross poles-open to everyone but please use class as intended. Class placing split Junior & Senior.
2		Getting Started - Fences 50cm No fillers. Class placing split Junior & Senior.
3		First Fillers - Fences 50cm with an introduction to small fillers. Class placing split Junior & Senior.
4		Very Novice - Fences 60cm no fillers. Class placing split Junior & Senior.

Winning Rosettes



Beautiful rosettes for any occasion

winningrosettes@gmail.com

01743 884189

www.winningrosettes.co.uk

Winnington Lodge Farm . Blackmore . Westbury . Shrewsbury . SY5 9RW



LIVERY AVAILABLE
STACEYS STABLES
 TF118RZ
 07980295997



Jewels Not Tools By Christine

EXPERIENCED NAIL TECH

EXPERIENCED, FULLY QUALIFIED,
INSURED NAIL TECH
BASED IN MALINSLEE, TELFORD.

Services available include
 Acrylic
 Hard gel
 Builder gel (BIA8)
 Express Gel tips
 Structured Manicures
 Std gel Manicures & Pedicures
 Nail art.

A relaxed, 1 to 1 friendly, home salon.
 Free off road parking.
 Design, style & length options
 including cute shorts to xxl sets.
 Your nails have the possibility of being
 as individual as you are.



Message directly for availability or to
 book in Via Facebook or Instagram



**Rug washing, proofing
 & repairing service.**
 Live sales via
 Facebook with a range of
 new & preloved items.

Contact via Facebook:
 Legacy Equine LTD
 Or Call Lisa:
 07942052934

Open 7 Days for skip delivery

L♥V

SKIPS

**Newport and Telford skip
 hire & waste collection**

**07887 998888
 01952 670014**

www.luvwaste.com






“support local businesses”



RING 1 - Cont Show Jumping



All jumping classes will be run under single phase rules
All classes are for riders of any age but must be
an appropriate size for their horse/pony
Classes will be split into Junior and Senior competitors

Afternoon Showjumping does not start before 12pm

CLASS	QUALIFIER	DESCRIPTION
5		Novice Plus - Fences 60cm with fillers. Class placing split Junior & Senior.
6		Circus Sable Novice Stakes - Fences 70 cm with no fillers. Class placing split Junior & Senior.
7		Intermediate - Fences 70cm with fillers Class placing split Junior & Senior.
8		Small Open - Fences 80cm with fillers. Class placing split Junior & Senior.
9		Open - Open 90cm with fillers Class placing split Junior & Senior.

- FIONA MOORE PHOTOGRAPHY -
SPECIALIST EQUINE PHOTOGRAPHER



WWW.FIONAMOOREPHOTOGRAPHY.CO.UK

Wrekin North Riding Club Rules

The Committee, Judges, Officials and Organisers reserve the right to require anyone, who does not adhere to the Club's rules and regulations, to leave the showground, at any point.

HEALTH AND SAFETY

The Club and the Committee has taken reasonable precautions to ensure health, safety and welfare of those attending the show. Members of the public and competitors are equally responsible for ensuring that they do not put themselves or others at risk and ensure they cooperate with the

Organisers in complying with health and safety legislation.

1. All competitors must abide strictly with the government's COVID19 guidelines as in force at any given time during the show season
2. We strongly recommend Riding Hat Standards: PAS 015:2011, VG1.01.040 2014-12 – This standard must also have either a BSI Kitemark or an Inspec IC Mark. ASTM F1163 2004a or 04a onwards- This standard must also have a SAI Global Mark
 1. Hard hats **MUST** be worn when mounted, with a correctly fitting, three-point chin-strap.
 2. Juniors **MUST** wear hard hats in all in-hand classes.
 3. Hard hats **MUST** be worn in the fancy dress class.
 4. Competitors who do not adhere to these rules will be dismissed from their class.
3. It is recommended that body protectors of BETA standard 3 or above are worn, plus a show jacket. The Committee strongly advise juniors to wear a body protector in jumping and working hunter classes.
4. Juniors are not to have obtained their 16th birthday by April 1st 2025
5. No galloping around the show-ground and no cantering around the parking area. Please use designated warm-up areas.
6. Horses **MUST** be under control at all times.
7. Any horse known to kick **MUST** wear a red ribbon in their tails.
8. Stallions **ONLY** must be bitted & display a stallion badge.
9. The committee reserves the right to refuse entry at any time. No refunds will be given on the day. Any refund request must be given in writing to the show secretary with the reason for the request, which will be put to the committee for consideration.
10. The committee reserves the right to cancel, amalgamate or change any class without giving a reason.
11. The judge's decision is final in all classes. Any objections must be made in writing to the show secretary within 20 minutes of the incident accompanied by a deposit of £25.00, which will be forfeited if the decision is overruled.
12. Excessive use of the whip or spurs or particularly rough handling will lead to dismissal from the class.
 1. No Whips or Spurs to be used in the Ridden Veteran.
 2. Juniors must seek direct consent from the Judge before the use of spurs in any class, and the Judge's decision in that respect will be final for that competition day.
13. The judge, in any class, reserves the right to refuse entry to anyone they consider not suitable for their mount.
14. If there is any abuse of any judge or other person then that competitor or spectator will be required to leave the showground.
15. No horse under 4 years of age is to be ridden in any class.
16. No horse can compete more than once in a class, unless all entries are non-competitive and consent has been obtained from the secretary.

17. Non-competitive entries will not qualify for a jump off
18. Please consider your horse's fitness when entering classes. Horses and ponies must not be entered for more than 3 showjumping classes and we reserve the right to refuse entry for any horse entered for more than 3 classes with a jumping element if considered appropriate by the committee.
19. Pony and rider combinations, if having competed on the lead rein, must remain on the lead rein all day. The only exception to this rule is for entries into the Getting Started Show Jumping Class.
20. No jump may be attempted more than 3 times. After elimination the competitor may continue the course at the judge's sole discretion.
21. No Jumping of equipment whilst being put away.
22. No person is allowed to enter the rings, except judges, officials and competitors.
23. Where possible if classes clash, then we will try to wait for the competitor, if times are posted prior to the day you must carefully check for any clashes and inform the committee at least 48 hours in advance in order that we can try and assist you in making adjustments, however this is not guaranteed in either circumstance.
24. Horses which have been in contact with an infectious disease must not attend any event. Current vaccination certificates and passports may be asked for. All equines must have been vaccinated within 12 months
25. Children are to be supervised at all times.
26. DOGS are to be kept on a lead at all times.
 1. Any dog foul must be cleaned up and taken home by the owner.
 2. Liability for damage caused by dogs rests with the owner.
 3. No dog is to be left in a hot car or appropriate action will be taken.
27. Do not drop litter on the showground and take any rubbish home with you, or place in the bins provided.
28. Do not muck out horse boxes or trailers on the showground.
29. No liability will be accepted by the committee or organisers for accidents, damage, injury or illness to any person, animal or property whatsoever.
30. Whiskers – it is advised that whiskers are to be trimmed, this rule will become mandatory for 2023 Members Only:
31. Concession entry fee rates will only be granted to members named on the show secretary's list of current members.
32. Points towards the annual awards and trophies will be awarded from the date membership is taken out or renewed. Back-dating will only be considered for the previous show from the initiation date.
33. At least 2 shows must be attended with the same horse and rider combination, entered in the same class, for points to count.
34. It is the member's responsibility to check the accuracy of the points table on the website or with the points secretary Lisa Poole
35. Any queries must be registered with the points secretary, Lisa Poole within 14 days of the results being posted and any queries after this time points adjustments will not be considered.
36. Any member shown to have been abusive in any form or to any person while at a WNRC event, or bringing the club disrepute elsewhere will have their membership suspended.

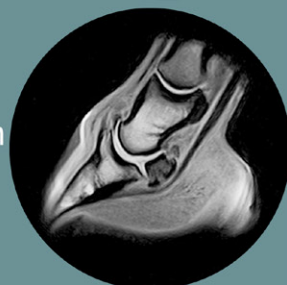
WARNING-RIDING CAN BE DANGEROUS

Riding can be a dangerous sport and despite the organisers taking all reasonable precautions, accidents can still happen. You are present at your own risk.



Fyrnwy Equine Group is an established equine veterinary service covering, Shropshire, Wrexham, Cheshire, The Wirral, North Wales and surrounding areas.

- Full in-house surgical facilities, Tier 3 hospital
- Standing MRI
- Two internal medicine and orthopaedic specialists
- Reproduction and stud work, including frozen and chilled semen, referrals and surgeries
- Embryo transfer
- 24 hour critical and routine inpatient care
- Caesareans and foal intensive care
- Modern mobile diagnostic equipment
- Full in-house laboratory
- 16 dedicated equine only vets
- Two centres consisting of a state of the art hospital in Baschurch and a fully operational branch in Holt, Wrexham



Baschurch
01939 260251

Holt, Wrexham
01978 664459

Fyrnwy.co.uk



RING 2

Tiny Trotters



This ring has specifically been set up for the youngest of our competitors with classes to suit children on or off the lead rein or who may need assistance and who are not quite ready for the main ring

Horse And Rider Combinations From Class 13 Are Allowed To Compete In Class 1 In Ring 1 Only As A Progression

Class 10, 11 & 12 Horse And Rider Combination Cannot Compete In Ring 1

No eliminations except in the case of a fall or under the judges discretion.

No horse under 4 years of age to be ridden in any class

Classes are split into lead rein or with assistance & off lead rein without assistance

Competitors may have as many helpers as required

Entry Fees

Classes start after Clear Round - Members £5.00 Non-Members £7.00

Clear Round - Begins 11:30 - £3.00 per entry. Limited entries.

CLASS	QUALIFIER	DESCRIPTION
Clear Round		Limited online entries, course set at 10 - 20cm - This class is £3 to enter.
10		Cross poles - Fences 10-20cm cross poles. Class placing split Unassisted & Assisted.
11		Next Steps - Fences 20-30cm cross poles. Class split Unassisted & Assisted.
12		Almost there - Fences 30-40cm mixture of cross poles & uprights. Class placing split Unassisted & Assisted.
13		Graduation Stakes - Fences 40-50cm mixture of cross poles & uprights. Rider & Pony combination can jump this class & class 1 in the main jumping ring only. Class placing split Unassisted & Assisted.

Fun Classes

Fun Classes still collect points for the end of year

Open to Children and well behaved adults and all horses and ponies

Entry Fees

Fun Classes - £5.00 Members. £7.00 Non-Members

Class starts after Tiny Trotters Jumping in the afternoon

CLASS	QUALIFIER	DESCRIPTION
14		Best Top Model - Do you think your horse could be Wrekin North's next top model? Open to all horses/ponies.
15		Talented Ponies - Show the judge how talented your horse/pony is! This could be a trick, how well they lead or even how well they stand to be groomed. Show us your talent!
16		Fancy Dress - Fancy dress ridden or in hand. Anything goes from outrageous outfits to no theme. Just whatever you fancy.



RING 3

Working Hunter Horse/Pony



All competitors will jump the course and then everyone will come into the ring then the judge will ask you about your horse/pony and ask you to do a simple individual display in walk, trot and canter (canter only required in Class 19 upwards)

Classes start at 9am prompt

**** Riders in Classes 17 and 18 cannot compete in Class 19 onwards ****
Senior and Junior riders will be awarded separately

CLASS	QUALIFIER	DESCRIPTION
17	★	Lead Rein Working Hunter - Open to lead rein riders only. Please use this class as intended. Fences 30-40cm cross poles, walk & trot only.
18	★	Nursery Stakes Working Hunter - Open to off lead rein riders. Please use this class as intended. Fences 30-40cm cross poles. No canter in group, optional canter in show. Support will be given if required.
19	★	Graduation Stakes Working Hunter - Open to off lead rein Juniors & Seniors. Fences 40-50cm to include fillers to the side & small back rails. Class placing split Junior & Senior.
20	★	Novice Working Hunter - Open to off lead rein Juniors & Seniors. Fences 50-60cm to include small fillers & back rails. Class placing split Junior & Senior.
21	★	Intermediate Working Hunter - Open to off lead Juniors & Seniors. Fences 60-70cm to include a variety of fillers. The highest 2 placed 133 & over M&M Competitors will qualify for STARS M&M WH. Class placing split Junior & Senior.
22	★	Open Working Hunter - Open to off lead rein Juniors & Seniors. Fences 75-90cm to include a variety of fillers. The highest 2 placed 133 & over M&M Competitors will qualify for STARS M&M WH. Class placing split Junior & Senior.
CH		Championship - Open to all 1st & 2nd placed competitors from classes 17-22. Free to enter. Junior Champion will receive a Rosette & Sash. Senior Champion will receive a Rosette & Sash. Reserve will receive a Rosette. SPONSORED BY FIONA CORK SADDLES.



RING 3 - Cont

In Hand Commences After Working Hunter



Open to riders of all ages without assistance and must be an appropriate size for their horse or pony.
Ponies should not exceed 148cm (14.2hh)

In Hand Showing PM - Commences Immediately After Working Hunter But Not Before 12.30

THERE WILL BE A 30 MINUTE BREAK FOR THE JUDGES LUNCH DURING THE EARLY PART OF THE AFTERNOON, TIME tbc

CLASS	QUALIFIER	DESCRIPTION
23		Best Turned Out - Open to all horses and ponies.
24	★	Mountain & Moorland - Open to any purebred, registered Mountain & Moorland. Purebred societies of Connemara, Dales, Dartmoor, Exmoor, Fell, Highland, New Forest, Shetland, Welsh A,B,C & D. Stallion, mare or gelding. Class placing split into Small & Large breeds.
25	★	Coloured - Open to all coloured horse/ponies of any height, age or type. Includes Appaloosa & Duns - Duns/Appaloosa do NOT qualify for STARS
26	★	In Hand Show Cob/Cob Type - Open to traditional or sawow cob types, can be shown in natural state/hogged or trimmed. Excludes M&M.
27		Best Handler - Open to anyone over the age of 12.
28		Youngstock - Youngstock must be 3 years old & under on 1st January in the current year.
29		In Hand Novice Horse/Pony - Open to any genuine novice/nervous horses/ponies.
30		Best Local Horse/Pony - Open to all horses/ponies local to Wrekin North Riding Club. Within 20 mile radius of showground.
31	★	Veteran - Open to any horse/pony aged 15 years or over.
CH		Championship - Open to 1st & 2nd places from classes 23-31. Free to enter. The Champion will receive a Sash & rosette. The reserve will receive a Rosette. SPONSORED BY ETHOS BEDDING.



RING 4

Mini Ridden & Mini In Hand Showing



Ponies should not exceed 148cm, unless otherwise stated

Classes 32-33 - Ponies should not exceed 128cms

No horse under 4 years of age is to be ridden in any Class

WE ARE FRIENDLY-IF YOU NEED TO HELP WITH A YOUNG RIDER WE DO NOT OBJECT

Mini Showing AM Commences 9:00AM

CLASS	QUALIFIER	DESCRIPTION
32	★	Ridden Mini & Best Turned Out - Lead Rein & First Ridden ONLY. Riders 12 years & under.
33	★	Lead Rein Ridden Show Pony - Open to riders 9 years & under. Leaders must be 16 years & over. A 2nd leader is allowed in this class. Ponies to be plaited.
34	★	Lead Rein Ridden Mountain & Moorland - Open to any purebred Mountain & Moorland ponies including Shetlands. Open to riders aged 9 years & under. Leaders must be aged 16 years & over. A second leader is allowed in this class. In natural state.
35		Nervous/Novice Mini Ridden - Open to novice/nervous riders aged 12 years & under and ponies 13'2hh (138cm) & under. No canter in group, optional canter in show. Can have helper in ring if required.
36	★	Pony Club Pony - Judged on the suitability of the type & going of Pony and the partnership between rider & pony. Open to riders aged 12 years & under, and ponies 13'2 (138cm) & under. No canter in group, optional canter in show. Off lead rein riders can have a helper in the ring if required Class placing split Lead Rein & Unassisted.
37	★	First Ridden Show Pony - Open to riders 12 years & under. Canter can be performed but will not form part of the judging. Can have helper without lead rein. Ponies to be plaited.
38	★	First Ridden Mountain & Moorland - Open to all small M&M breed types; Shetland, Dartmoor, Welsh A & B, Exmoor. Open to riders aged 12 years & under. Canter can be performed but will not form part of the judging. Can have helper without lead rein. In natural state.
39	★	In Hand Young Handler - Open to any handler 12 years & under. Please ensure handlers are in full control of their pony without assistance before entering the ring.
40		Best Local Horse & Rider - Open to all horses & riders local to Wrekin North Riding Club. Within 20 mile radius of showground.
CH		Championship - Open to all 1st & 2nd placed competitors from classes 32-40. Free to enter. The Junior Champion will receive a Rosette & Sash. Senior Champion will receive a Rosette & Sash. Reserve will receive a Rosette. SPONSORED BY ENGLISH EQUINE LTD.



RING 4 - Cont

Ridden Showing PM



See Qualifier page for information
Open to any age of Horse or Pony

In Hand Showing PM - Commences Immediately After Mini Showing but Not Before 12.30

THERE WILL BE A 30 MINUTE BREAK FOR THE JUDGES LUNCH DURING THE EARLY PART OF THE AFTERNOON, TIME tbc

CLASS	QUALIFIER	DESCRIPTION
41	★	Best Turned Out - Open to all horses and ponies natural or plaited
42		Novice Horse/Pony - Open to all novice/nervous horses/ponies. No canter in group, optional canter in show. Should be plaited/unplaited as appropriate to breed/type. Class placing split Junior & Senior.
43	★	Ridden Horse/Pony - Open to horses/ponies of any age & breed. Should be plaited/unplaited as appropriate to breed/type. Class placing split Junior & Senior.
44	★	Riding Club Horse/Pony - To be judged on the suitability of the combination. Open to riders 12 years & over, riders of a suitable size for horse/pony. Should be shown in accordance to tbreed/type. Class placing split Junior & Senior.
45	★	Veteran - Open to any horse/pony aged 15 years & over. Should be plaited/unplaited as appropriate to breed/type. No spurs or galloping in this class.
46	★	Show Hunter/Show Pony - Open to all ponies of suitable size exceeding 12'2hh (128cm). Should be plaited. Class placings split Junior & Senior.
47	★	Riding Horse/Hunter Horse - Open to all horses of any suitable size for the rider. Should be plaited.
48	★	Mountain & Moorland - Open to any purebred & registered Mountain & Moorland. Purebred societies of Connemara, Dales, Dartmoor, Exmoor, Fell, Highland, New Forest, Shetland, Welsh A,B,C & D. Stallion, mare or gelding. Class placings are split into Small & Large breeds.
49	★	Coloured - Open to all coloured horses/ponies of any height, age or type. Includes Appaloosas & Dun - Dun/Appaloosa do NOT qualify for STARS
50	★	Ridden Show Cob/Cob Type - Open to traditional or show cob types, can be shown in a natural state, hogged, or trimmed. Excluding M&M.
51		Best Local Horse & Rider - Open to all horses & riders local to Wrekin North Riding Club. Within 20 mile radius of showground.
CH		Championship - Open to all 1st & 2nd placed competitors from classes 17-22. Free to enter. Junior Champion will receive a Rosette & Sash. Senior Champion will receive a Rosette & Sash. Reserve will receive a Rosette. SPONSORED BY FAS LTD.



Qualifier Information



Please refer to the individual Qualifier website
for rules & full details.



STARS CHAMPION OF CHAMPIONS

Reference 

21st-24th November 2024, Aintree Equestrian Centre
Points will be awarded at each show & at the end of the season.

The Champion/s will be offered the opportunity to represent
WNRC at Stars Champion of Champions in November,
a true HOYS experience for all RC competitors.

In the event the Champion does not wish to attend the place will
pass to the Reserve Champion
www.starschampionships.co.uk

***In regards to coloured classes that are STARS eligible, Duns, Appaloosa & Palomino
are NOT eligible to STARS.***

**Dressage
Jumping
Eventing
Showing**

**Are you ready
for the season?**

www.fionacorksaddles.co.uk

07969 398956



PIC•COLLAGE



English Equine Ltd

The one for all Equine service

WE OFFER

- » LESSONS
- » TEMP STAFF
- » 24/7 TRANSPORT AND RECOVERY
- » EQUINE BEHAVIOUR CORRECTION
- » CLIPPING/GROOMING
- » AND MUCH MORE...

☎ 07883 702 283

✉ englishequineltd@gmail.com

Find us on

📍 English Equine

